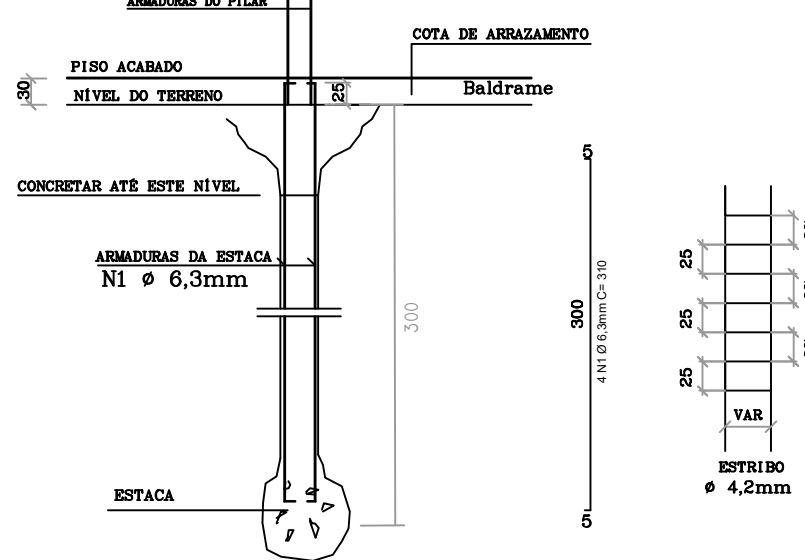


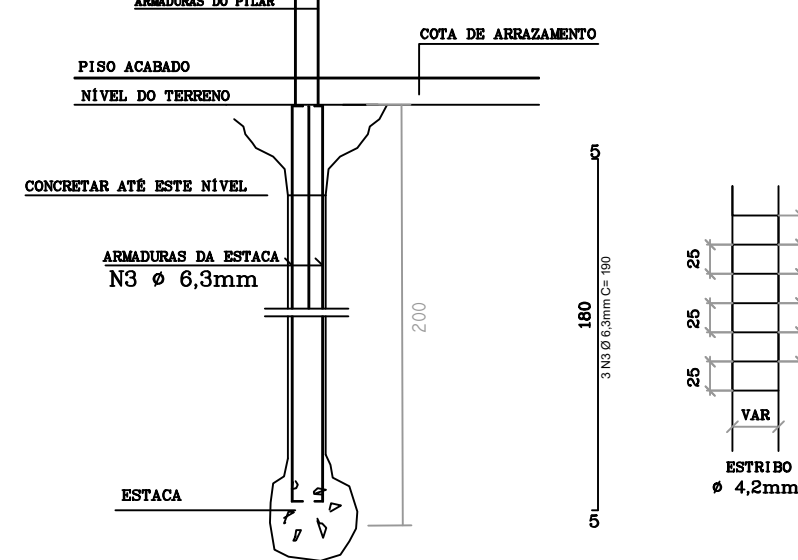
Estacas

Escala 1:75

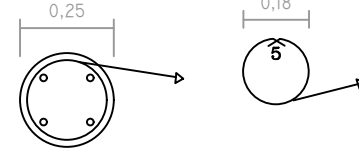
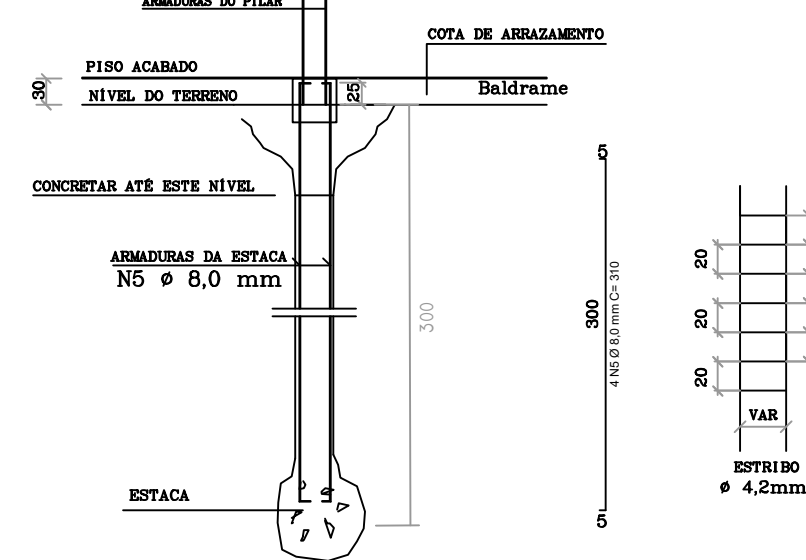
DETALHE GÊNÉRICO DAS ESTACAS Ø 25cm (17X)



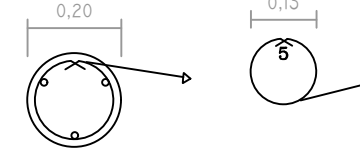
DETALHE GÊNÉRICO DAS ESTACAS Ø 20cm (7X)



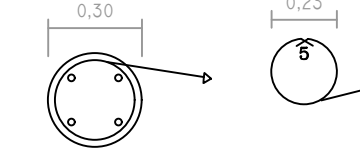
DETALHE GÊNÉRICO DAS ESTACAS Ø 30cm (5X)



N2 Ø 4,2mm
c=62 cm
Q=11 unid./estaca
Qtotal=187 unid.

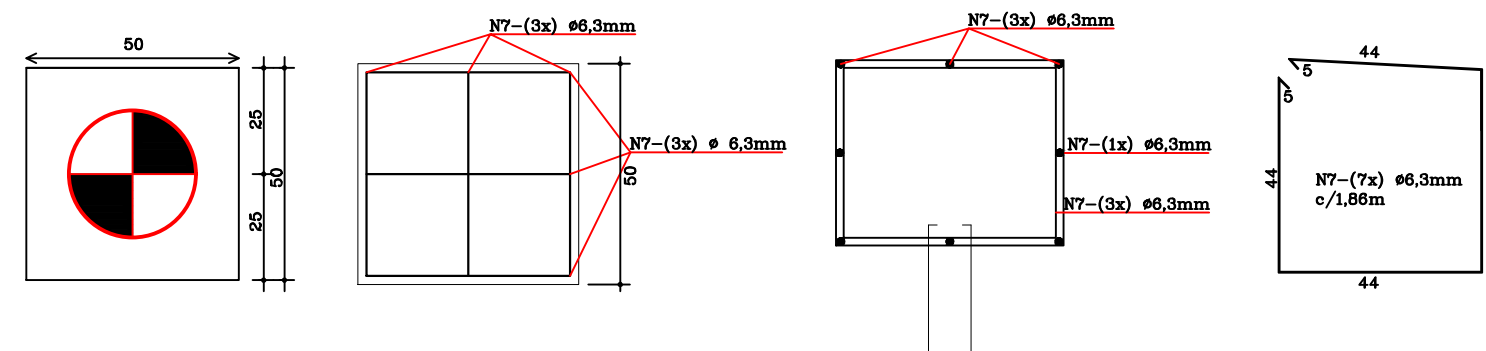


N4 Ø 4,2mm
c=46 cm
Q=7 unid./estaca
Qtotal=49 unid.

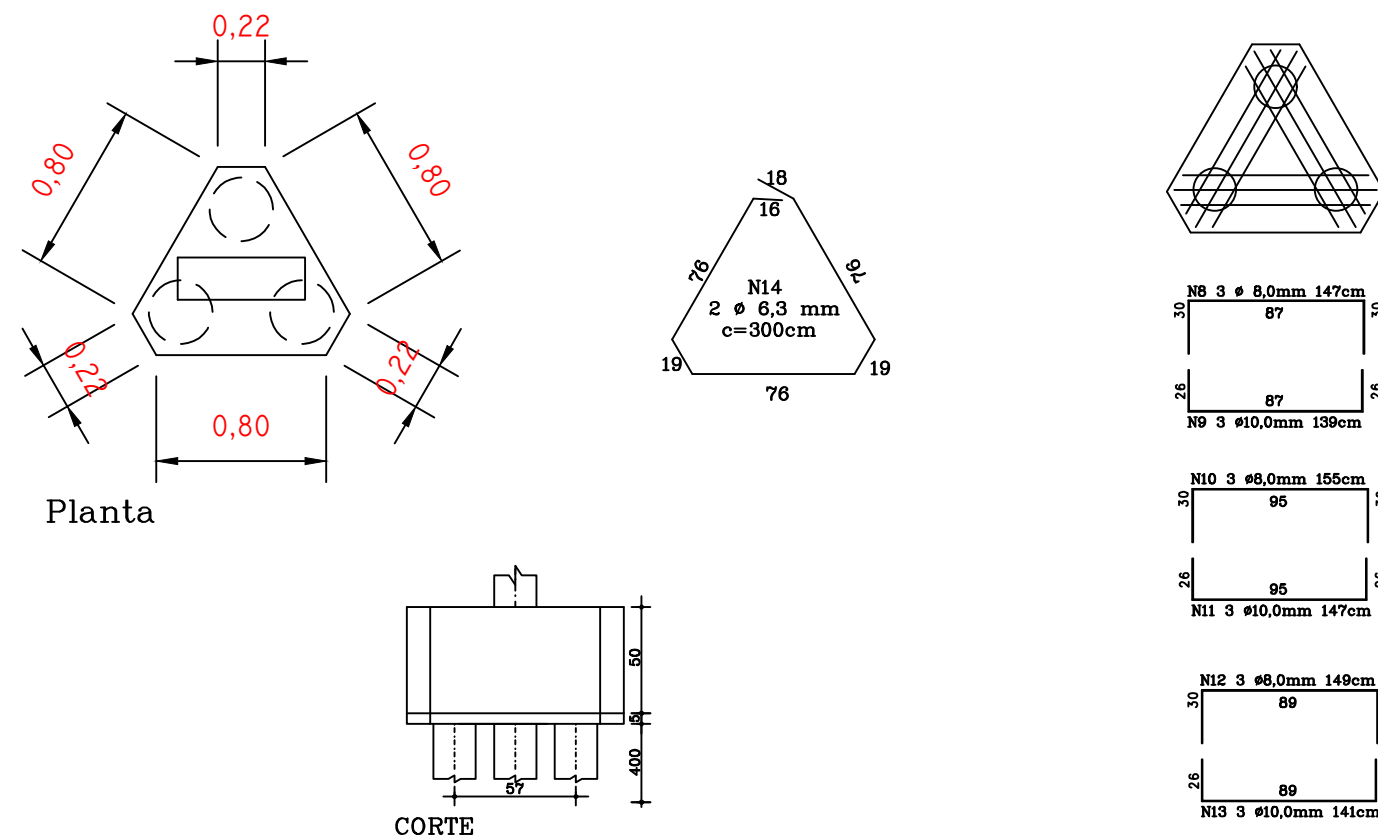


N6 Ø 4,2mm
c=76 cm
Q=14 unid./estaca
Qtotal=70 unid.

BLOCO (50/50/50) B1 - (2X)

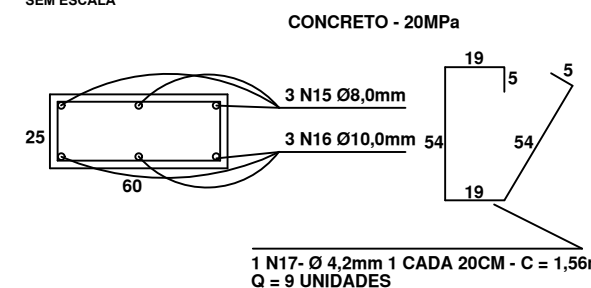


FUNDAÇÃO – BLOCO B2 (1X)



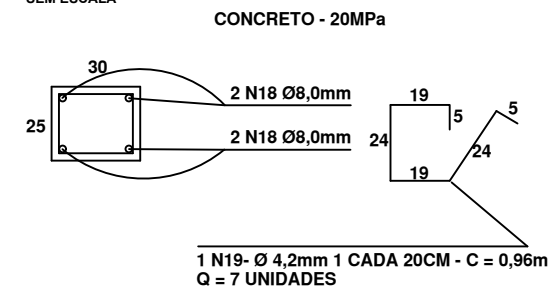
VIGAS BALDRAME

VB 01 (60 x 25 x 200 cm)
SEM ESCALA
CONCRETO - 20MPa



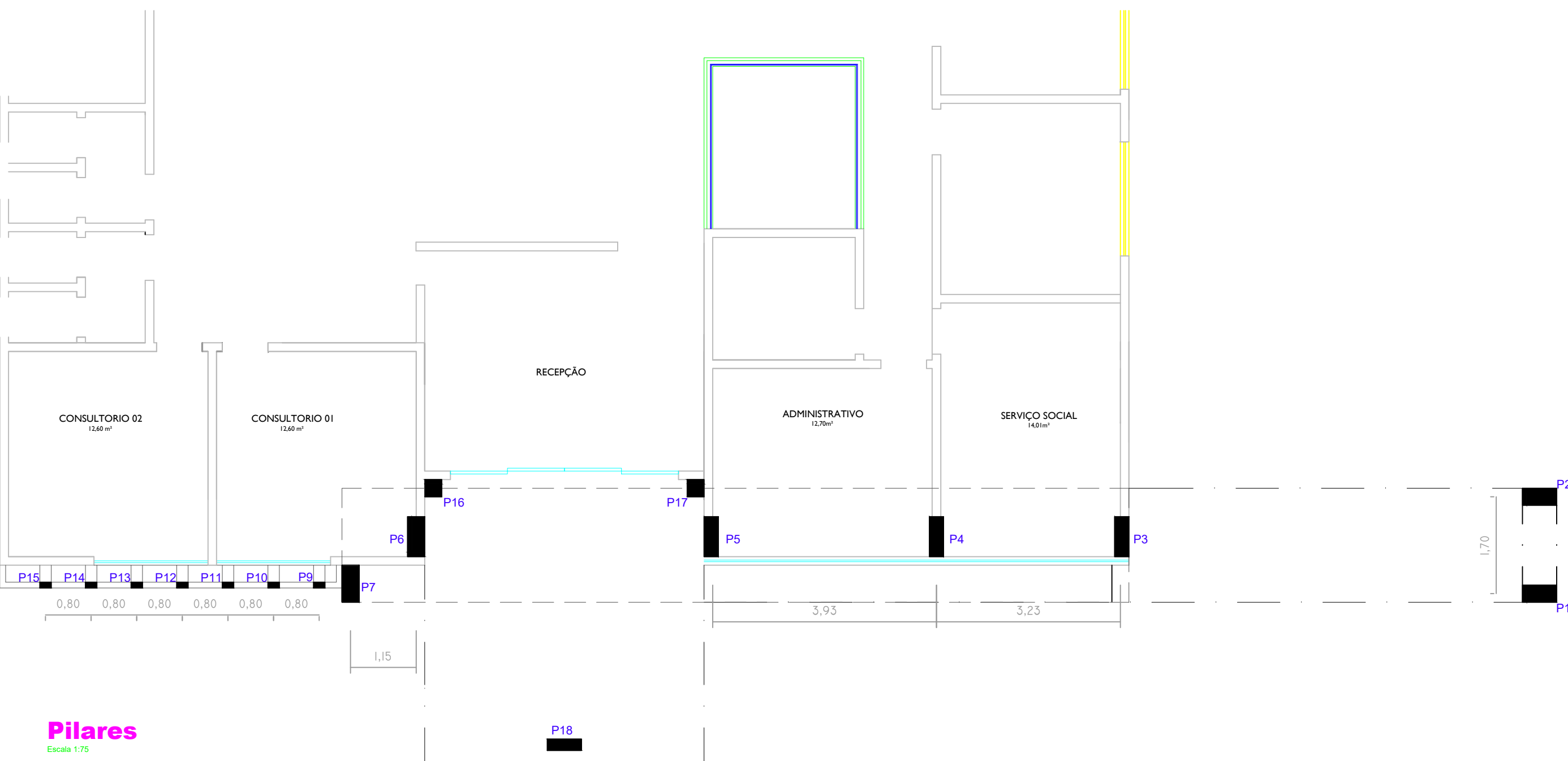
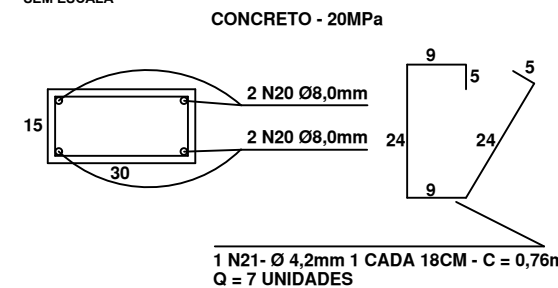
VIGAS BALDRAME (4X)

VB-2, VB-3, VB-4, VB-6 (25 x 30 x 150 cm)
SEM ESCALA
CONCRETO - 20MPa



VIGAS BALDRAME

VB - 5 (15 x 30 x 100 cm)
SEM ESCALA
CONCRETO - 20MPa



Pilares

Escala 1:75

TABELA DE ARMADURA						
POSICÃO	AÇO	Ø (mm)	COMPR.(m)	QUANT.	TOTAL (m)	kg/m
N1	CA-50 A	6,3	3,10	68	210,80	0,245
N2	CA-60 B	4,2	0,62	187	115,94	0,109
N3	CA-60 B	6,3	1,90	21	39,90	0,245
N4	CA-60 A	4,2	0,46	49	22,54	0,109
N5	CA-50 A	8,0	3,10	20	62,00	0,395
N6	CA-60 A	4,2	0,78	70	54,60	0,109
N7	CA-50 A	6,3	1,86	14	26,04	0,245
N8	CA-50 A	8,0	1,47	3	4,41	0,395
N9	CA-50 A	10,0	1,39	3	4,17	0,617
N10	CA-50 A	8,0	1,55	3	4,65	0,395
N11	CA-50 A	10,0	1,47	3	4,41	0,617
N12	CA-50 A	8,0	1,49	3	4,47	0,395
N13	CA-50 A	10,0	1,41	3	4,23	0,617
N14	CA-50 A	6,3	3,00	2	6,00	0,245
N15	CA-50 A	8,0	2,13	3	6,39	0,395
N16	CA-50 A	10,0	2,13	3	6,39	0,617
N17	CA-60 B	4,2	1,56	9	14,04	0,109
N18	CA-50 A	8,0	1,63	16	26,08	0,395
N19	CA-60 B	4,2	0,96	28	26,88	0,109
N20	CA-50 A	8,0	1,13	4	4,52	0,395
N21	CA-60 B	4,2	0,76	7	5,32	0,109

RESUMO DO AÇO				
AÇO	Ø (mm)	COMPR.(m)	kg/m	PESO (KG)
CA-60 B	4,2	239,32	0,109	26,09
CA-50 A	6,3	282,74	0,245	69,27
CA-50 A	8,0	112,52	0,395	44,45
CA-50 A	10,0	19,20	0,617	11,85
PESO TOTAL CA-60 B				26,09
PESO TOTAL CA-50 A				125,56

MATERIAIS				
	FCK (Mpa)	UNID	QUANT	TOTAL
CONCRETO P/ BLOCOS, VIGAS E PILARES	20	m³	1,35	
CONCRETO P/ CAPA DE LAJE - E = 4,0 cm	20	m³		1,35
FORMAS P/ FUNDAÇÕES		m²	7,83	
FORMAS P/ ESTRUTURA		m²		7,83

PROJETO ESTRUTURAL

OBRA
AMPLIAÇÃO de FACHADA e GARAGEM UBS-VENTANIA

END.: Avenida Anacleto Bueno de Camargo - Centro - Ventania - PR

PROPRIETÁRIO
PREFEITURA MUNICIPAL DE VENTANIA PR

INDICADA
DATA DEZEMBRO / 2019

DESENHO
JEFFERSON PHILLIPI

RESP. TÉCNICO
Eng. CIVIL/EDIO JOSÉ STIMAMIGLIO
CREA PR-14315/D

ANTÔNIO HELLY SANTIAGO
PREFEITO MUNICIPAL

FOLHA
01/04